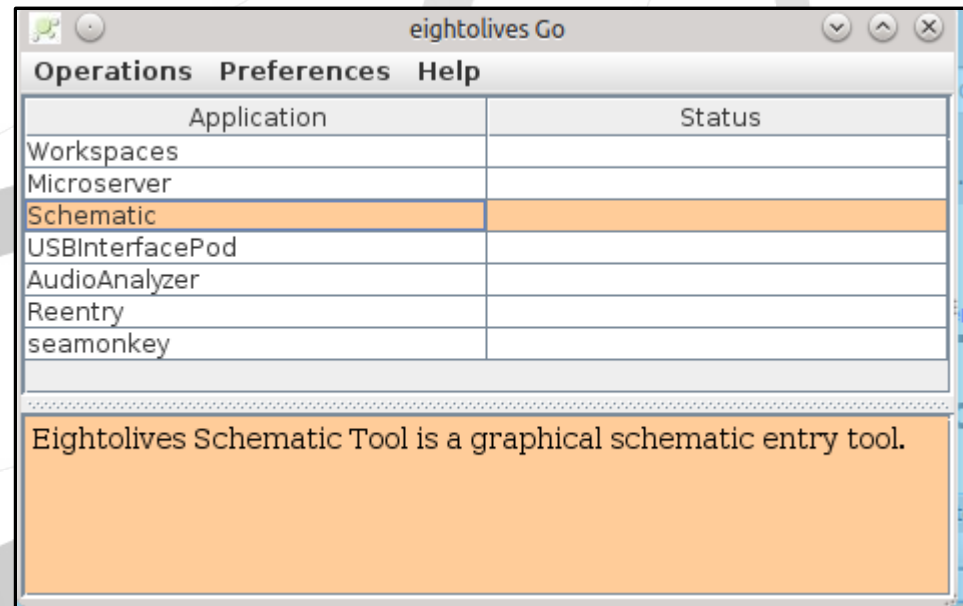
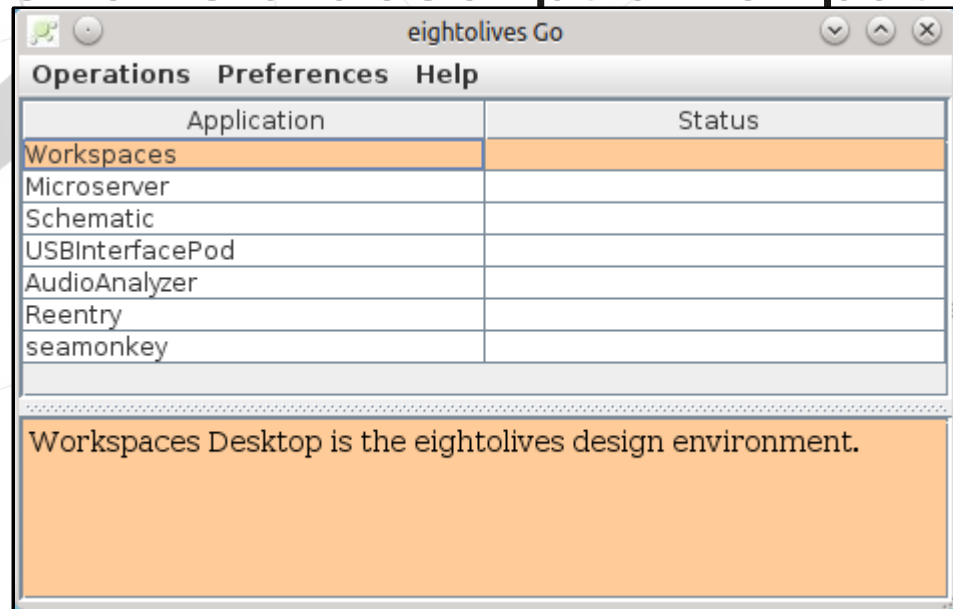


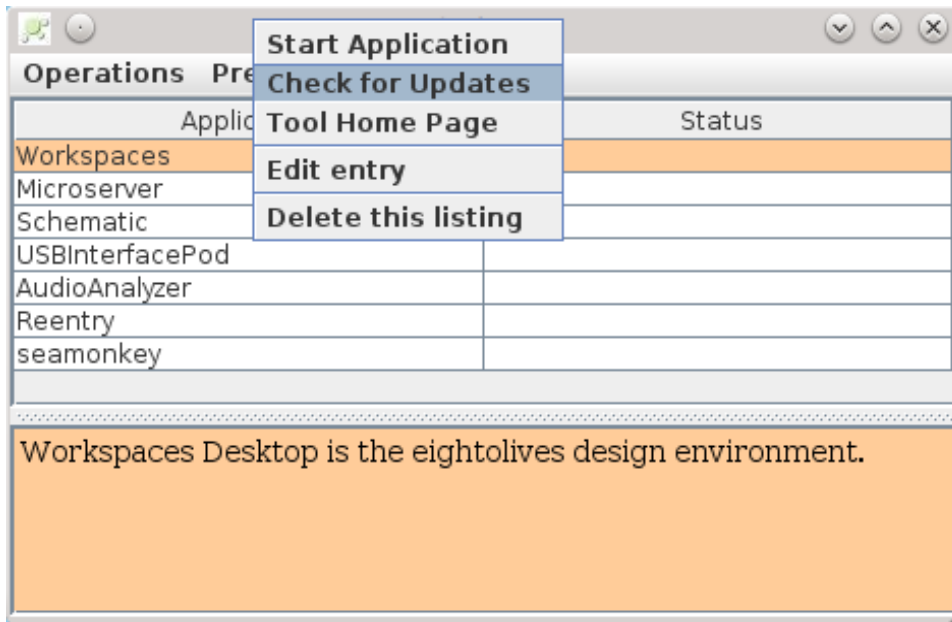
Using eightolives' Go



William_Kaupinis@eightolives.com
Jan 1, 2014

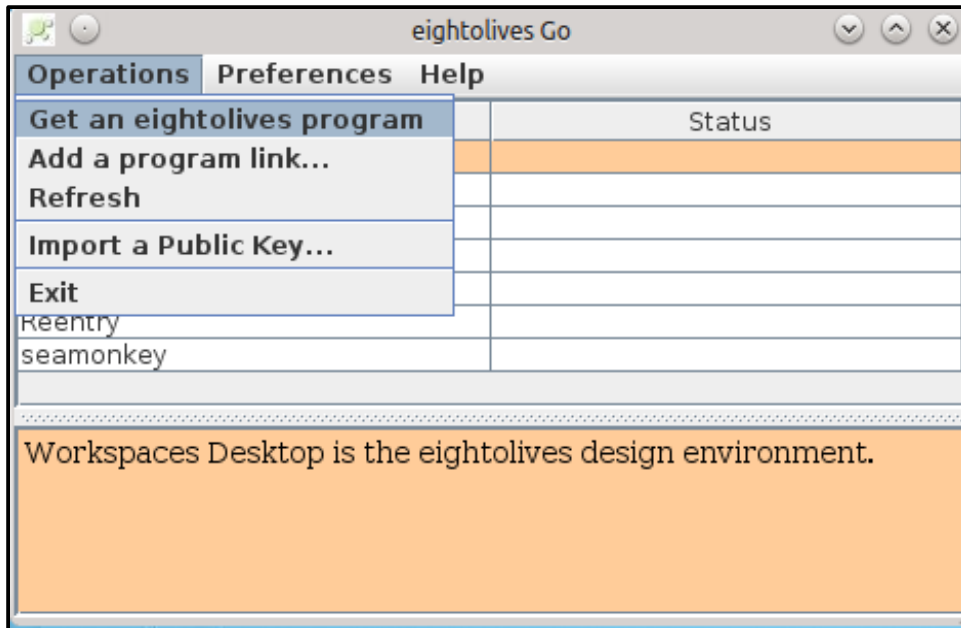
- Eightolives' Go is an application launcher for eightolives' software or any other program or script you have on your PC or laptop.
 - Go organizes your workflow tools in a convenient, tabular list.
- *Double click* an item to launch.
- *Right click* for a popup menu with options.
- The lower display area shows a description or path for the selected item.





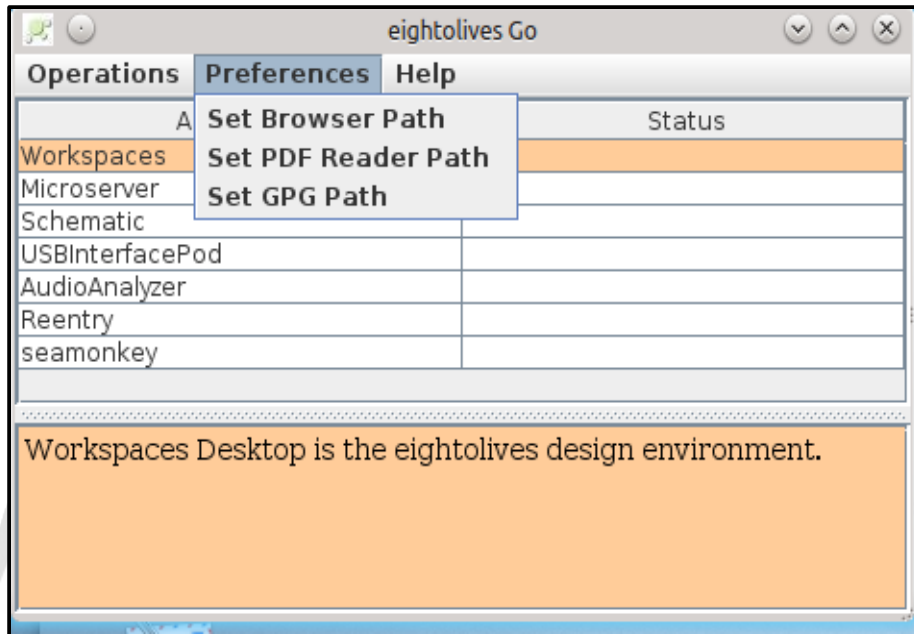
- The Popup Menu lets you start the application, check for updates, edit the entry, visit the tool's home page or delete the item.

- If you check for updates and an update is available, you can invoke the Install Wizard which helps install the updated software on your computer.



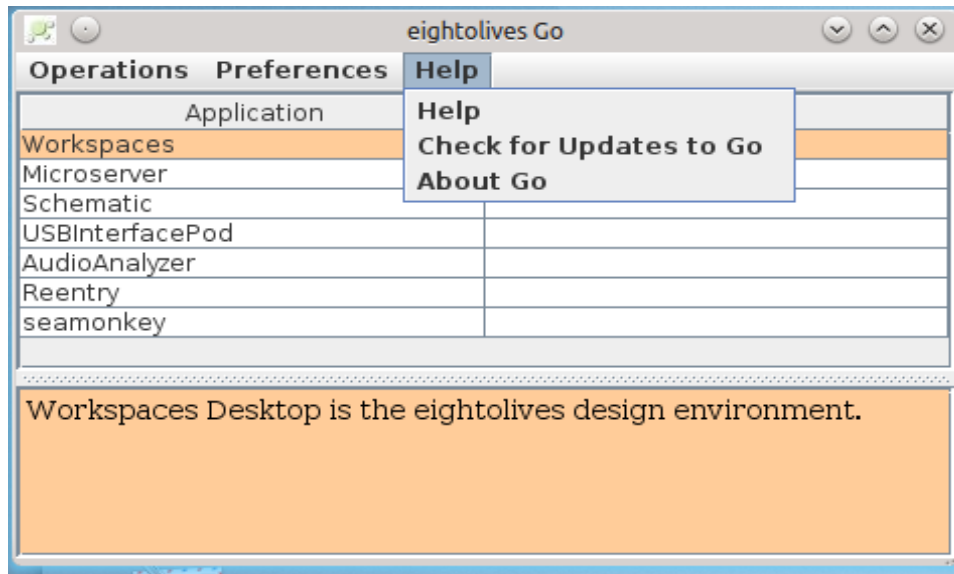
- The Operations Menu lets you get a program from the eightolives web site.

- You can add a link to any program or document on your computer
- If you have Gnu Privacy Guard (gpg) installed, you can import a public key.



- The Preferences Menu lets you set the paths to your preferred browser, pdf reader and Gnu Privacy Guard

- The recommended but optional Gnu Privacy Guard program is used to automatically verify eightolives' software download signatures.



- The Help Menu has a link to eightolives' Help page and lets you check for tool updates.

- Go is a convenient way to group links to frequently accessed items.
- Use Go to list links to your key project tools.
- List related project documents

Getting Go

- You subscribe to Go from the eightolives' web site and receive a user name and password
 - A subscription gets you software updates for 1 year.
 - A free version of Go is available, but no updates are included
- Log in at the eightolives User Login page and download to your Downloads directory EightolivesInstall.exe (Windows) or EightolivesInstall.tar.gz (Linux)
- For Windows: execute EightolivesInstall
- For Linux: `tar -xvzf EightolivesInstall.tar.gz`
Then execute EightolivesInstall

Go is installed in your Home Directory

- EightolivesInstall creates a directory structure in your Home Directory and installs all software there

your_home_directory

.eightolives

Go

Go.cmd (windows), Go (Linux)

- Go is started by executing Go in the .eightolives\Go subdirectory

Prerequisites

- Go requires Oracle's Java to be installed. You normally install Java from <http://www.java.com>
- It is useful to define the environment variable `JAVA_HOME` when you have multiple versions of Java installed

Software Integrity

- The EightolivesInstall downloads are digitally signed. The digital signatures can also be downloaded when you download the software.
- The eightolives Public Key is downloadable from http://www.eightolives.com/eightolives_key.gpg
- With gpg installed, Go will automatically verify signatures for all eightolives downloads
- Go is also available on CD which avoids use of the Internet during install

For more information

- Visit <http://www.eightolives.com>
- For the latest Java download, visit <http://www.java.com>
- For more information on GnuPrivacyGuard (gpg) visit <http://www.gnupg.org>
- For GnuPrivacyGuard downloads visit <http://www.gnupg/download/>